



# STANDARD OPERATING PROCEDURES FOR SAFETY

## HOW TO EXTINGUISH AN EQUIPMENT FIRE

**Rationale:** To help prevent personal injuries while attempting to extinguish equipment fires and to reduce serious damage to equipment while minimizing the environmental impact of such a fire.

**Background:** Since Corner Brook Pulp and Paper re-introduced mechanical harvesting equipment in the early 1990's, there have been several equipment fires that have resulted in complete losses of equipment. No serious personal injuries or major environmental incidents occurred as a result of these fires.

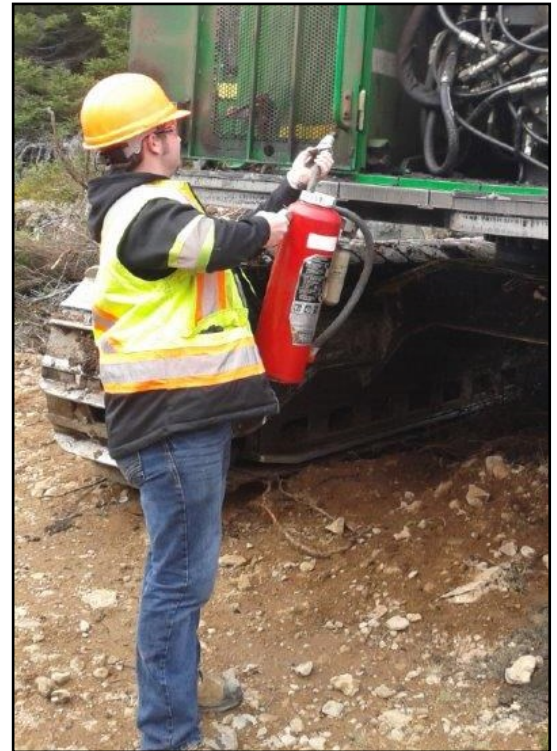
### **Procedures:** .

- ◆ If you notice smoke or fire coming from your equipment, assess the severity of the situation from inside the cab. Stay calm and use some basic common sense. If the fire is serious, and if your equipment has a built-in fire suppression system, locate the fire suppression actuator, pull the pin and depress the plunger. The actuator may be located under or behind the seat. A second one may be outside the cab, inside a panel beside the door, but before you activate this one, ask yourself a few quick questions:
  - ◇ Can you escape safely? If no, turn the machine in a direction that will ease your descent and avoid personal injury.
  - ◇ Can the machine be safely moved away from the tree line to avoid the potential of a forest fire? – If yes, keep your time aboard the machine to a minimum and only move away as far as necessary.
  
- ◆ Call for assistance on the VHF radio located in the equipment.
- ◆ Lower all attachments to the ground to avoid potential personal injury to fire fighters should the hydraulic system fail.
- ◆ Shut off the ignition and the Master switch.
- ◆ Find out where the hand-held fire extinguisher is located and if you can safely retrieve it to fight the fire.



Exit the machine and retrieve the hand-held extinguisher. **Fight the fire with the hand-held extinguisher only if it is safe to do so.** Even if the fire appears to be out, use the hand-held extinguisher to spray additional chemical in the direction of the fire. Remember, the fire suppression system may only knock back the fire enough for you to fight it with the hand-held unit. Most pieces of equipment have small holes located around the engine compartment doors that are designed for the nozzles of fire extinguishers. They enable you to spray the engine and hydraulic pump areas from ground level or from the catwalk.

- ◆ Continue to spray with the hand-held unit until it is completely empty.
- ◆ Never attempt to re-enter the cab of the machine while the fire is burning.
- ◆ When additional help arrives on site, continue to spray chemical around the machine until you determine the fire is completely extinguished.



- ◆ After the fire is extinguished assess the site for fuel or oil spills. Clean up all spilled material and dispose of it properly. Depending on the size of the spill, it may have to be reported as an Environmental Incident. A spill greater than 70 litres must be reported to the Coast Guard.
- ◆ Environmental **and Safety Incident** Reports must be completed for all equipment fires, and forwarded to the Environmental Management Representative and **Safety and Training Supervisor** respectively.



**Let's not have any more losses like this!!**