



# STANDARD OPERATING PROCEDURES FOR SAFETY

## WORKING NEAR POWER LINES

**Rationale:** To provide safe procedures for employees to follow when working near or adjacent to both overhead and underground power lines.

**Background:** More than 500 electrical contact accidents are reported annually in Canada; up to 5% of these result in fatalities. CBPPL operations are often located adjacent to or in the vicinity of power lines, presenting major hazards to workers and equipment, and the potential for serious injury or a fatality.

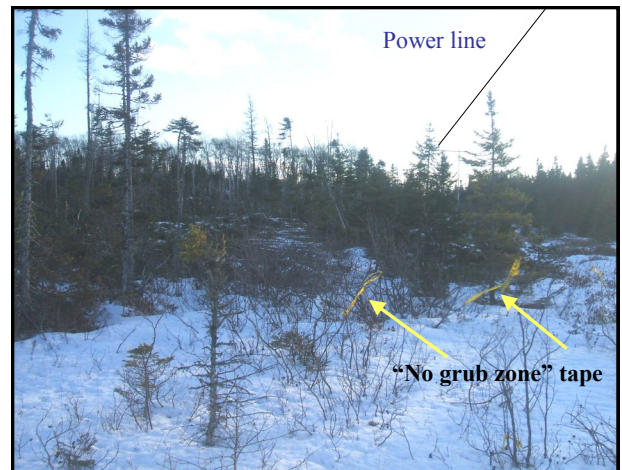
### Procedures:

#### Planning Your Work

As part of the preharvest planning process, always check for power lines in the proposed work area. Most power lines are on the operating maps, but any new power lines may not be in the database. Before commencing work near power lines, contact the local electric utility office to determine the voltage of the lines, the location of any underground lines near the work area, and if working conditions are safe. Talking to the utility will help in assessing hazards, planning safeguards, as well as complying with legislation, permits (if necessary), and the utility policies on worker and public safety. Before building **capital** roads, CBPPL's Roads Supervisor will contact the utility; for **operational** roads and harvester and forwarder trails, it is the responsibility of the Contractor Supervisor. Utility contact numbers are: **Newfoundland Power: 1 800 663 2802; Newfoundland Hydro - 1 888 737 1296.**

When planning operations, consider the following:

- **Ensure equipment operators working near power lines hold a valid Power Line Hazards certificate**, issued within the last three years.
- If possible, locate roads and trails so as to avoid or minimize crossing under power lines. Locate landings and loading areas away from overhead lines.
- To ensure adequate clearance, locate the road or trail within 10-15m (33-50 ft.) of the structure supporting the lines. Clearance should allow safety from arcing, as direct contact is not necessary for current to pass through equipment. Stay clear of the anchors and guy wires that extend from the structure. Damage to these may result in fallen lines or increased sag of the line, reducing safe clearance distances.



- Never attempt to measure ground clearance on your own. The electric utility has the proper tools to determine ground clearance for you.
- Provide a "spotter" to ensure attachments are clear when building the part of the road directly under the power line.
- Mark travel lanes under power lines within the cutover, to guide operators to cross at appropriate locations.
- Mark "danger" trees that could fall into lines, so cutters can take appropriate precautions, or make alternate arrangements to remove these trees safely.

## Crossing Under Lines

When a truck or piece of equipment must cross under a power line:

- Ensure booms and other attachments are in the stowed or lowered position prior to crossing beneath the line.
- Cross only at designated spots that have been previously identified as having adequate overhead clearances .
- Don't travel directly under the wires when moving parallel to them.
- Maintain at least 5.5 m (18 ft.) between overhead power lines and any extended part of a piece of equipment.
- Be aware that air temperature, wind, and ice loading conditions can change the sag in overhead wires thereby affecting the clearance.



## Cutting Near Power Lines

- Do not cut any tree that is within or could accidentally fall within 5.5 m (18 ft.) of a power line. Remember, contact with any power line can be fatal.
- Do not cut any tree that may come into contact with a **secondary or service line** unless measures are taken to control the descent of the tree. Unless the utility has provided permission for reduced clearances, maintain the same distances as described above for all power lines.
- Cutting trees closer than the above limits requires special training, and should only be done by qualified personnel, who require certification in this province.
- Notify the local electric utility whenever working in an area where trees are within the above limits.

## Power Line Contact Emergency Response

If a tree, a piece of equipment, or a co-worker comes in contact with a power line, refer to the procedures in the **Emergency Response Procedures Manual**, found on all Corner Brook Pulp and Paper Woodlands operations. The manual provides these procedures in flow chart and written formats, and includes the appropriate emergency contact telephone numbers.

