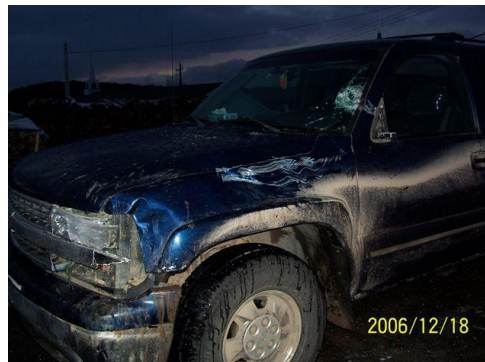




SAFETY ALERT – 04

Breakdown in Communications Results in Forwarder Striking Commuting Vehicle



The above pictures are a reminder of what can happen when there are breakdowns in communications on the job. Fortunately, there were no injuries from this accident, but as you can see, the commuting vehicle was heavily damaged.

This accident happened during a shift change, the most hectic time of any operation. A forwarder operator was backing onto the road, completely unaware that a commuting vehicle was passing at the same time. The driver of the commuting vehicle did not contact the forwarder operator to advise that he wanted to pass.

All drivers of vehicles (pickups, commuting vehicles, wood trucks, etc.) are reminded that they must not pass heavy equipment working on or near a road, without first contacting the operator of the piece of equipment. Vehicle drivers should park at a safe distance away from the machine and proceed to pass, only after the equipment operator has acknowledged that he is aware of where they are and has lowered his boom or attachments to the ground.

Question - What caused this accident?

Answer - Drivers and operators rushing

- Improper procedure
- Positions of people
- Position of commuting vehicle
- No communications

This Safety Alert is intended to serve as a reminder to drivers of vehicles that contact must be established with operators of heavy equipment working on or near a road, before any attempt is made to pass that piece of equipment.